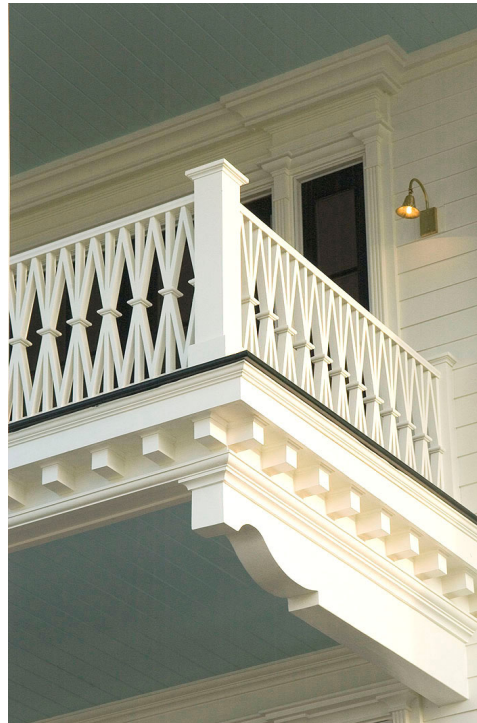


CHRISTINE HUCKINS FRANCK, ARCHITECT



SELECTED RESIDENTIAL WORKS

CHRISTINE HUCKINS FRANCK, ARCHITECT offers full custom architectural services with a focus on new homes, additions, and renovations. An award-winning firm with projects built across the country, we specialize in adapting classical and traditional design principles to today's lifestyles. Our services include:

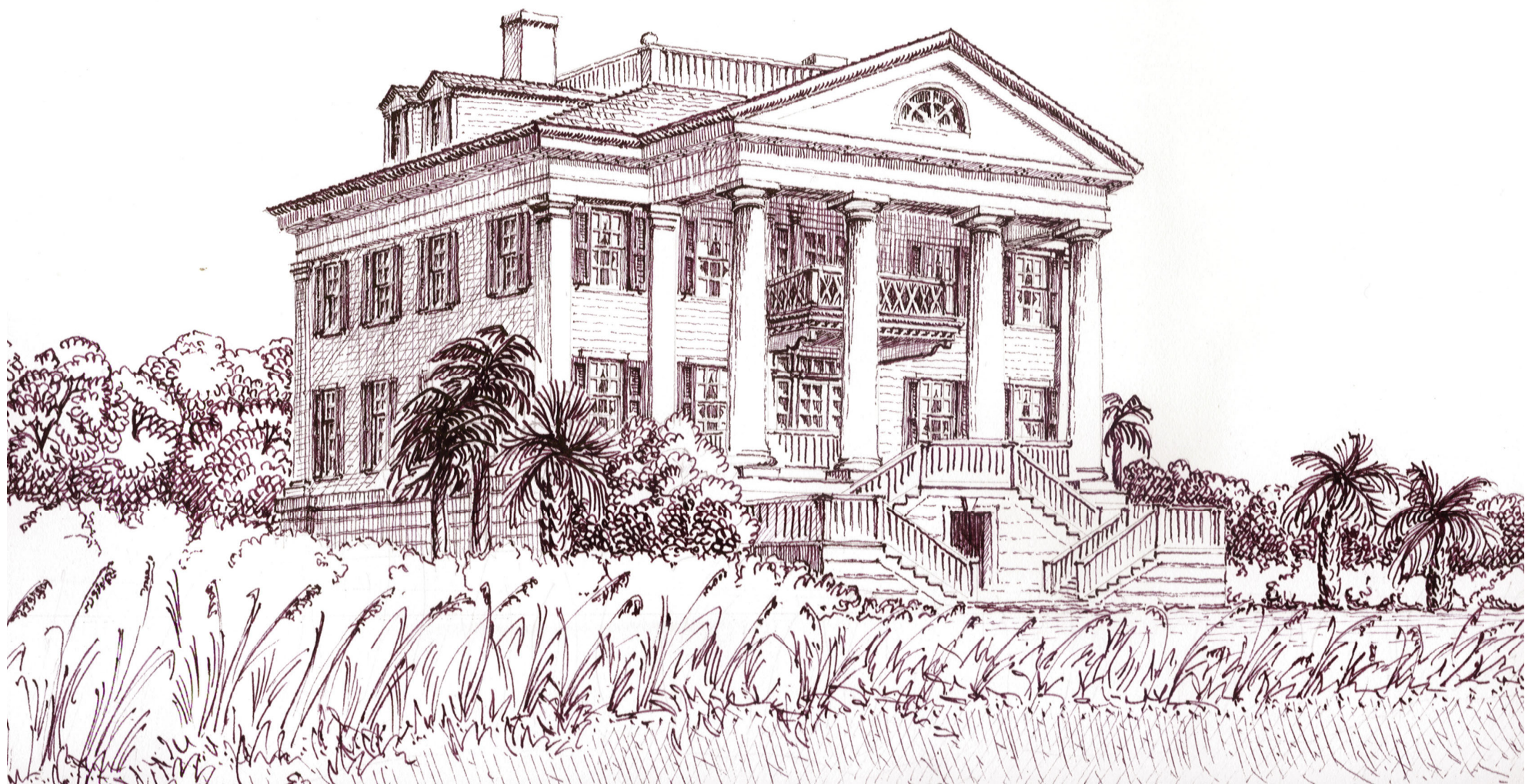
- Pre-design and budgeting
- Site design and master-planning
- Schematic design through construction documentation
- Selection, specification, and detailing of all interior and exterior finishes, lighting, hardware, plumbing, appliances, and systems necessary to your home
- Bidding, contractor selection, and contract administration
- Schematic landscape design and decoration

Founded and directed by Christine Huckins Franck, our practice looks forward to learning about your design needs, helping you understand the process of designing and building your custom home, and working closely with you. From our first meeting through realization of your vision, we stand side-by-side with you to create and deliver a highly-customized home reflecting you and your values.

We are honored to have won awards for our work including various design awards and awards recognizing Franck's service to the profession. Likewise, we are thrilled to see our clients' homes published and exhibited in both America and Europe.

Dedicating to improving architecture, teaching forms an important part of our principal's work. Over the course of her career, she has served as the first Executive Director of the Institute of Classical Architecture & Art (ICAA), developed and directed educational programs for the ICAA and The Prince of Wales's Foundation, and held appointments at Notre Dame, Georgia Tech, and the University of Colorado. Most recently, she founded the Center for Advanced Research in Traditional Architecture (CARTA).





CHADSWORTH COTTAGE

Figure Eight Island, North Carolina

Located on the northernmost tip of Figure Eight Island, a private barrier island on the coast of North Carolina, Chadsworth Cottage was designed as the primary residence of the founder of one of the nation's largest column manufacturing companies. The client wished to create a home timeless in its design and modern in its living.

After rising up one flight of stairs from the ground floor entry, an elliptical arch frames the view to ocean beyond. A living room, central hall, dining room, and porch form the primary living spaces along the waterfront façade with service functions, such as the kitchen and laundry, located toward the land side. Three bedrooms, including a generous owner's suite, occupy the second floor, with an office and entertainment room in the attic.

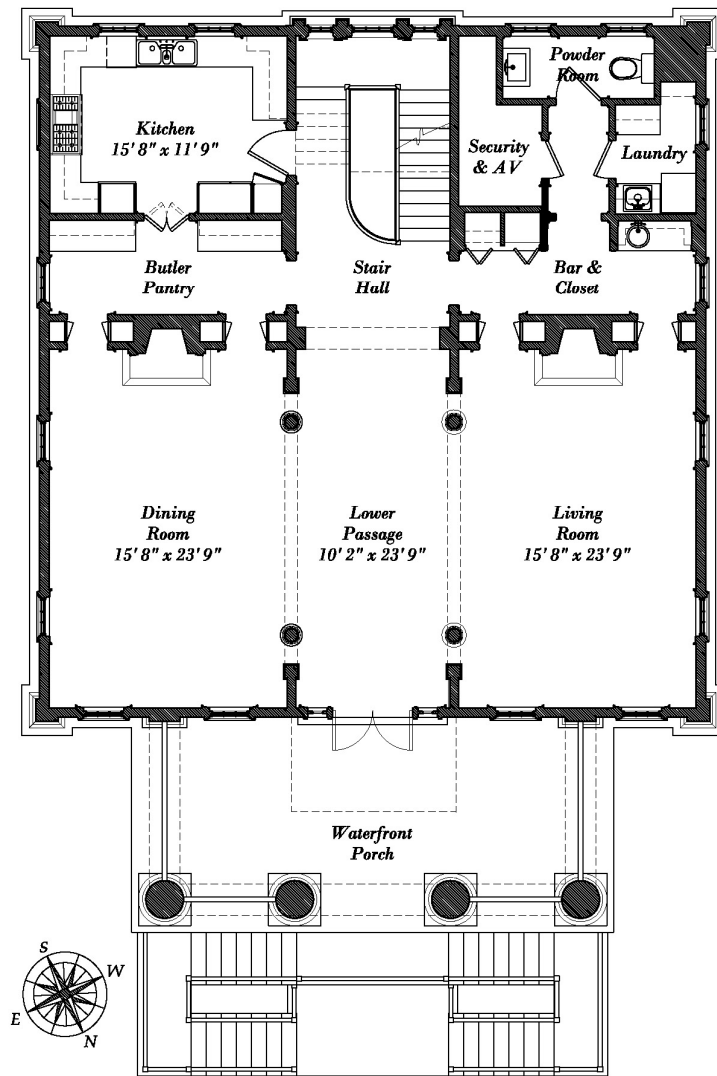
Due to the sensitive nature of the environment, a bio-filter wastewater system (hidden within the front pergola) was employed. Building in this harsh hurricane-prone, humid, coastal environment required building to stringent coastal construction codes and developing new details to withstand the environment.

This 5,000 square foot home was built at a cost of \$1,500,000, including the hurricane resistant materials and complex structure. Christine Huckins Franck, Architect provided all residential design work from schematic design through construction documentation and administration, conceptual landscape design, and decoration.

Chadsworth Cottage won the 2007 *Palladio Award* for Best New Residential Construction and *Wrightsville Beach Magazine's Home of Distinction*, graced the covers of five magazines, and was exhibited at the Royal Institute of British Architect's "Palladian Design: The Good, the Bad, and the Unexpected," in London, England.

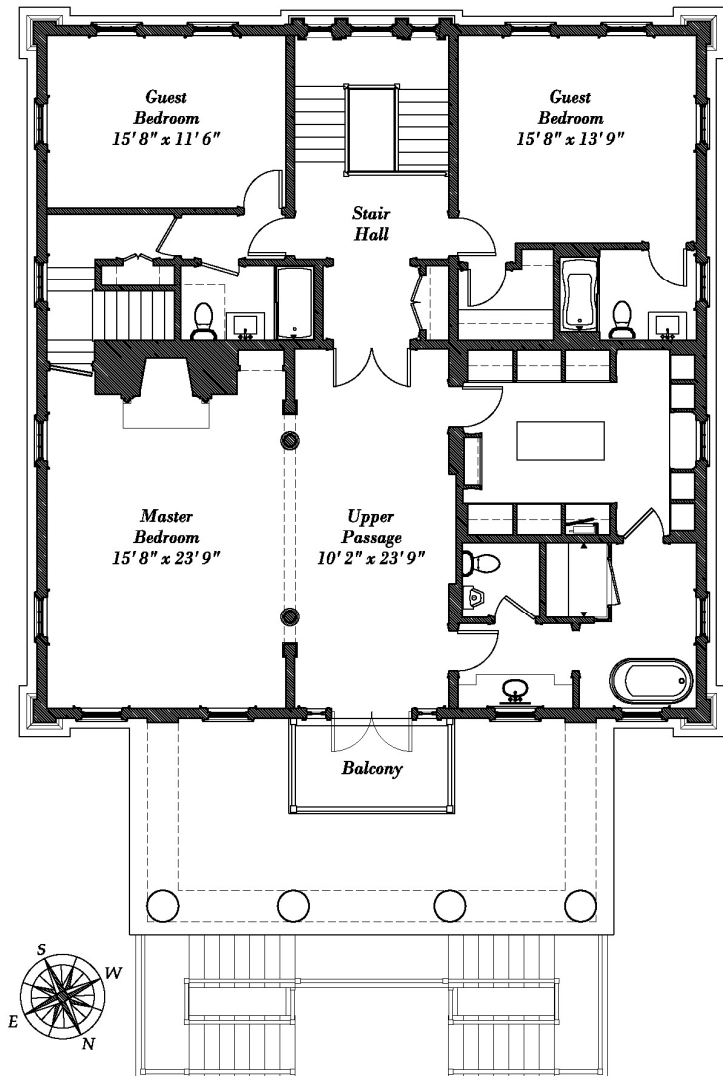


Rendering of the waterfront façade (left) by Christine Franck. The landside elevation (right) employs a Serliana motif for the stair hall windows, providing natural light to the stair hall.



CHADSWORTH COTTAGE
First Floor Plan

0 1 4 8 16 Feet



CHADSWORTH COTTAGE
Second Floor Plan

0 1 4 8 16 Feet



From the upper balcony, views open to the ocean, inlet, and Intercoastal Waterway (above). The landscape design includes formally planted Crepe Myrtles and informal massings of rosa rugosa and sea grasses along the protective dunes (above).



A structured grid of bluestone forms the formal entry path to the ground level door (left). Skirting boards transform from open rustication to allow for potential flooding, to closed rustication at the enclosed entry hall. Light bulbs are enclosed to limit light pollution. The Serliana motif window is detailed with stock molding profiles assembled to form doubled pilasters around the windows (right and above). All sashes are operable. The owner often opens the stair hall and waterfront windows, taking advantage of the cross-ventilation.



Lighting the stair hall and central passage is a two-story Serliana motif window. Ground floor rustication continues into the entry hall, handmade bricks cool the floor, and the stair begins (right). The stair hall (right) rises up a full three stories from the ground floor, which is covered in handmade brick from North Carolina. The custom handrail was hand-carved to curl into the lower volute.





The stair hall rises up to the first floor lower passage (left) which opens to the porch and dramatic landscape beyond. View into the dining room (above) with its Biedermeier secretary and Federal-era antiques. Window architraves descend to the floor, visually heightening the rooms.



A fireplace surround is custom designed from stock moldings and finished with Delft tiles painted with a selection of birds (above). All trim elements and doors, such as shown in the living room (right) were assembled from stock profiles. An original painting by John Kelley, over the fireplace, was purchased for this room.





Stock cabinet sizes and details were used to create a simple, functional kitchen (left). White subway tiles and an oak butcher block counter-tops create durable work surfaces. Just off the living room, a bar (above) holds the owners collection of Baccarat crystal and antique bar service.



A generously sized powder room is located along the landside of the house, and shaded by Bermuda shutters (above). Between the kitchen and dining room, a Butler Pantry contains the owner's china collection, drawers for his silver service, and a fuller height counter-top for comfort when plating meals (right).





The second floor owner's suite includes a large bedroom (left) with a custom designed fireplace surround. From the ante-room at the owner's suite, the owner's bathroom opens first to a lavatory and to a bathing room with tub and mosaic shower beyond (above).



The ante-room (right) with its period French Empire daybed is a small sitting room for the owner. The stair hall enters this space from the left and to the right, the balcony overlooks the landscape beyond (above). Colors reflecting the sand and sky beyond are used throughout the house.





The waterfront porch is a primary living space in the house (left) with outdoor shower facilities framing the entry through to the garage. A balcony off the owner's suite provides a small sitting area for enjoying the view (above). A bundled wheat motif is used for the balcony railing after carefully studying several historic examples. Compared to the simple pickets of the main porch railing, the balcony appears jewel-like in its more elaborate design.



The toile guest bedroom is hung with custom designed curtains and bed hangings (right) in a pale blue and cream. The color scheme continues into the guest bathroom (above), where simple tile surfaces are easy to clean of sand and salt brought in from outdoors.





A FAMILY FARM

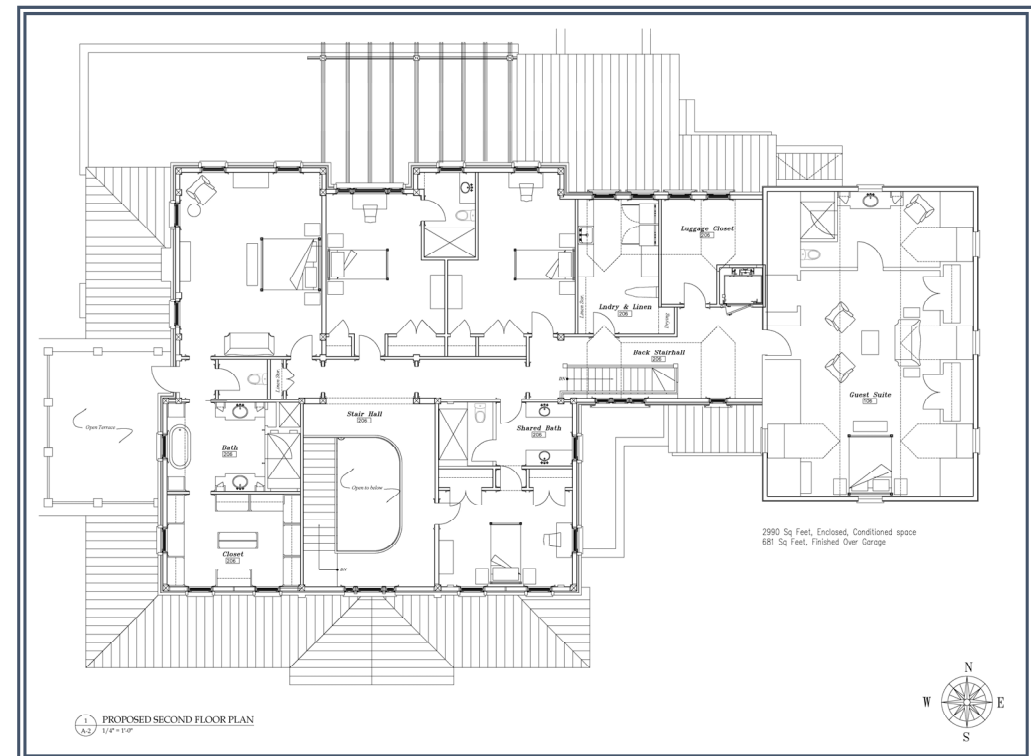
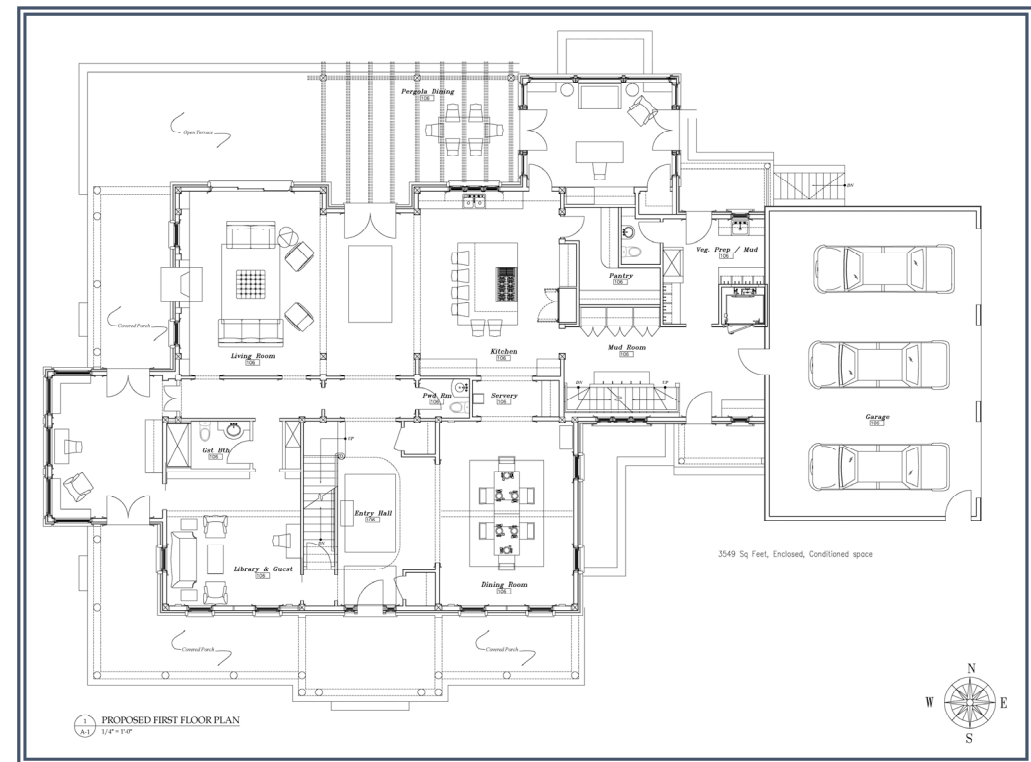
Colorado

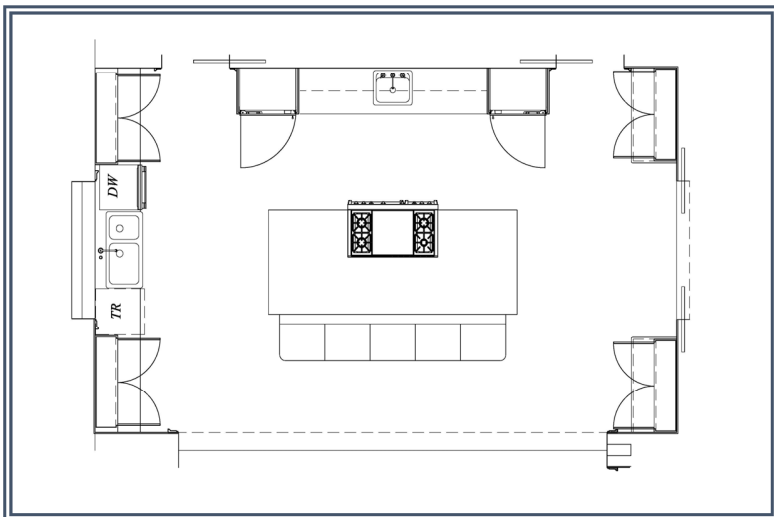
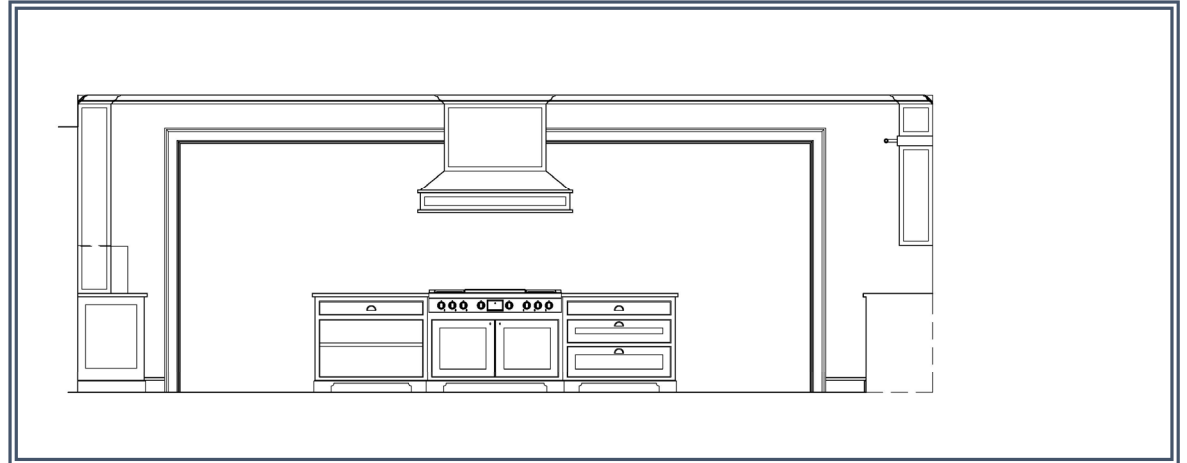
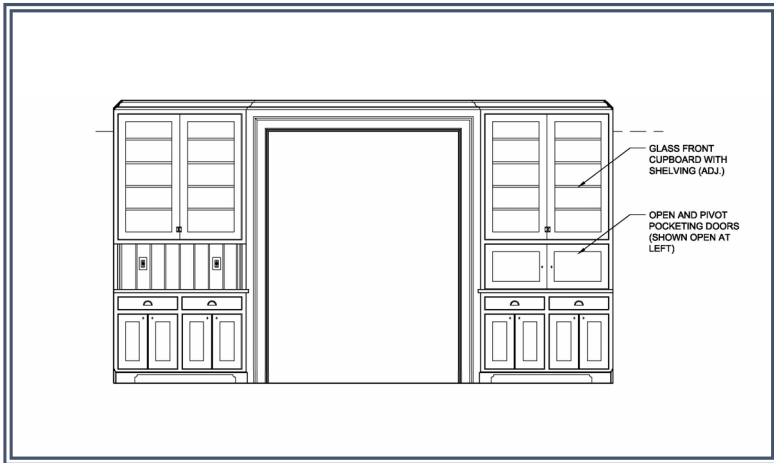
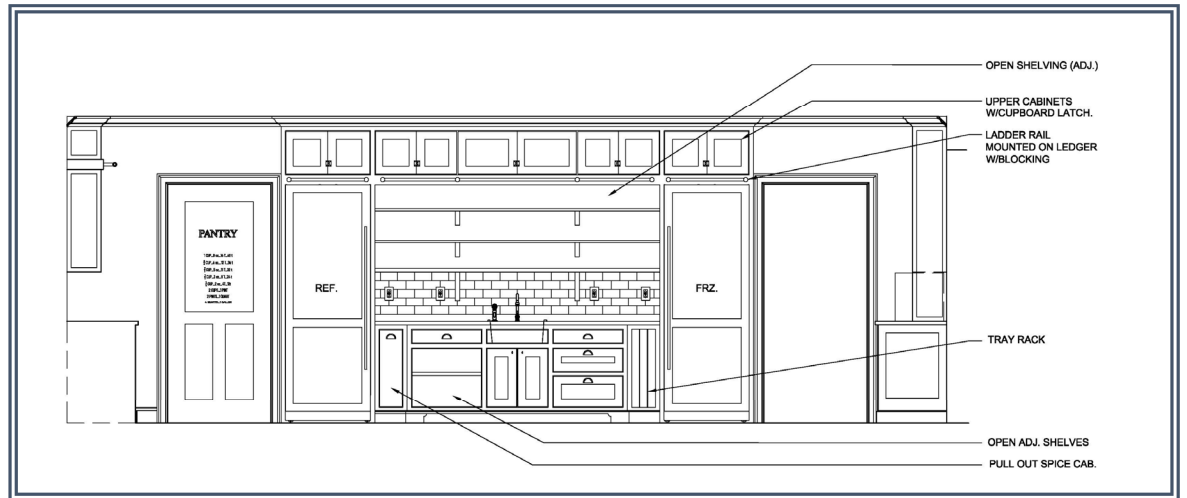
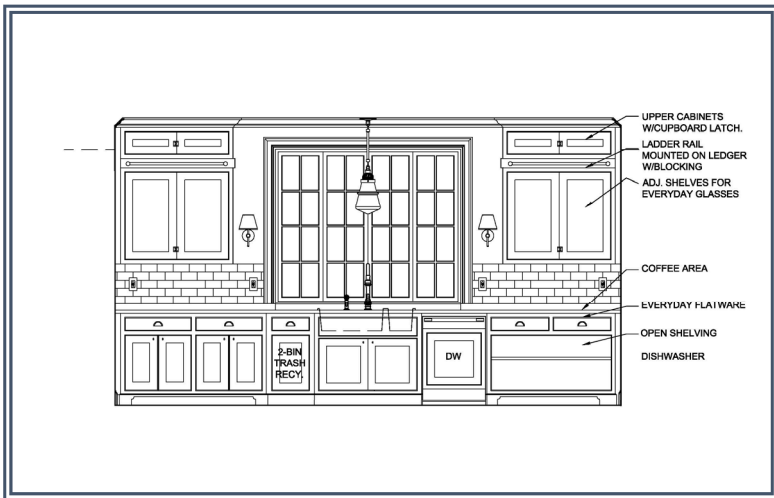
This new home and landscape was designed for a young couple who sought to leave the city behind and create a small family farm where they could raise their children in the ethics of sustainability. They sought a traditional and refined English colonial style building reminiscent of mid-Western farmhouses. Though traditional in appearance, this home was designed with the most advanced building systems to reduce its energy use, such as geothermal ground source heat pumps, radiant floors, recycled gray water, future solar for electrical supply, and careful siting of rooms, windows, and porches to make use of daylight and the sun's position.

Entering the front door, a large stair hall welcomes visitors and connects through to the living room and porches beyond. Take full advantage of the outdoors, there are ample porches with connected indoor and outdoor space.

Like many clients today, this family desired the ability to have a large informal kitchen and living area while also having a formal dining space. That idea of flexibility continued through to ensuring a first floor office could be converted to a ground floor bedroom when needed. A hyphen filled with service amenities, including pantry, mudroom, dog wash, and service stairs, connects the house to the garage.

Upstairs, the owners' suite includes access to a small rooftop balcony where they can view out over their farm. Children's rooms each have en suite bathrooms. A guest suite, accessible with an elevator, is over the garage.





When designing a new home or renovation, we begin by learning how you live and how you want to live, and then custom design those spaces for you. In this kitchen, both owners are avid cooks and gardeners, so the kitchen was designed to be fully functional for their preferred uses and layout, including drawers and cabinets, a ladder rail for reaching upper cabinets, appliance selection and specification and integrating those into the cabinetry, shelving design, lighting, cabinet hardware, and selection of plumbing fixtures and fittings.



From first concept, to color studies to consider different materials, to quick sketches to illustrate how a space will look and feel in three dimensions, we work regularly by hand. In every project we seek to tease out and understand your design sensibility and the things that will make your home uniquely yours.





BYRD RESIDENCE

Fort Worth, Texas

Once a fine Colonial Revival home (see historic image below) in an historic neighborhood, this home was insensitively modified in the 1980s with incorrect classical details (bottom right). The owner decided to remove the front portico and replace it with a correctly proportioned, more beautiful portico, as well as making major interior renovations and additions.

An initial “back-of-the-napkin-sketch” (top right) showed the design intent, and the final renovated façade is seen to the left. Refinements such as these convey the importance of classical design literacy and understanding how to use scale to resolve design issues. Christine Huckins Franck, Architect provided design services to Hull Homes, the builder of the project.

Historic Fort Worth awarded this renovation its *2010 Residential Award for Excellence in Preservation* and the Institute of Classical Architecture & Art Texas Chapter its *2011 John Staub Award for Restoration / Renovation*.



Conceptual sketch (top right). Period photograph of house in the 1930s (above). House after poorly designed 1980s renovation (right). Renovated house (left).





Left: The rear elevation AFTER renovation with new porch and basement level between bedroom wing to the left and addition to the right, re-whitewashed brick, and new terrace, pool, and outdoor dining pavilion (shown left) contrasts with the rear elevation BEFORE renovation (shown above) showing poorly spaced column configurations, proportionally heavy cast stone balustrade, stripped brick, and overall poor composition. Right: A new stair hall (right) connects the new garage level entry up to the renovated kitchen and new family room, and the bedrooms above.





KINDERHOOK HOUSE

Flora, Mississippi

A family of four will soon move into this new home in Flora, Mississippi. Located on 12 acres, which we carefully designed to preserve the tree structure of the former pine plantation, the owner sought to recreate a house that had inspired her since childhood. The owner has served as curator of an important River Road plantation and aimed to work in the classical language while transforming it to meet modern sensibilities.

Future phases include a pool cabana that will be used as a guest cottage when family visits. We worked closely with the owner, an avid gardener, to design the buildings and the landscape such that they form various terraces and outdoor rooms. To the south of the house is a kitchen and cutting garden, while the landscape to the north is meandering and naturalized.

A long central salon connects the front porch, through the main living space with its dramatic stair hall and fireplace surround, and out to the rear porch shaded by a pergola, to the landscape of the pool beyond. Daytime rooms such as the kitchen, laundry, and office, are located to catch the southern sun. Evening rooms, such as bedrooms, are located to the northerly and quieter end of the house. A second floor includes a large entertainment room and guest suite.

The sketch shown to the left was a preliminary conceptual sketch created for the owner during an early site visit. We work in hand sketches at the beginning of design to keep our ideas loose and free-flowing.





When working on a project, we work at all scales, beginning with the landscape and siting the home, working through all of the interior architectural details, from stairs to moldings, from fireplace surrounds to kitchen cabinetry. We work closely with the owner to develop a scheme reflective of their taste and the character they want for their home, and then select and detail all finishes such as tile and stone, special wall finishes, and all details, interior and exterior. The owner of this project enjoys decorating, so we have assisted with reviewing color choices, fabric selections, and providing sketches to illustrate concepts of furniture layout.





NEW RESIDENCE

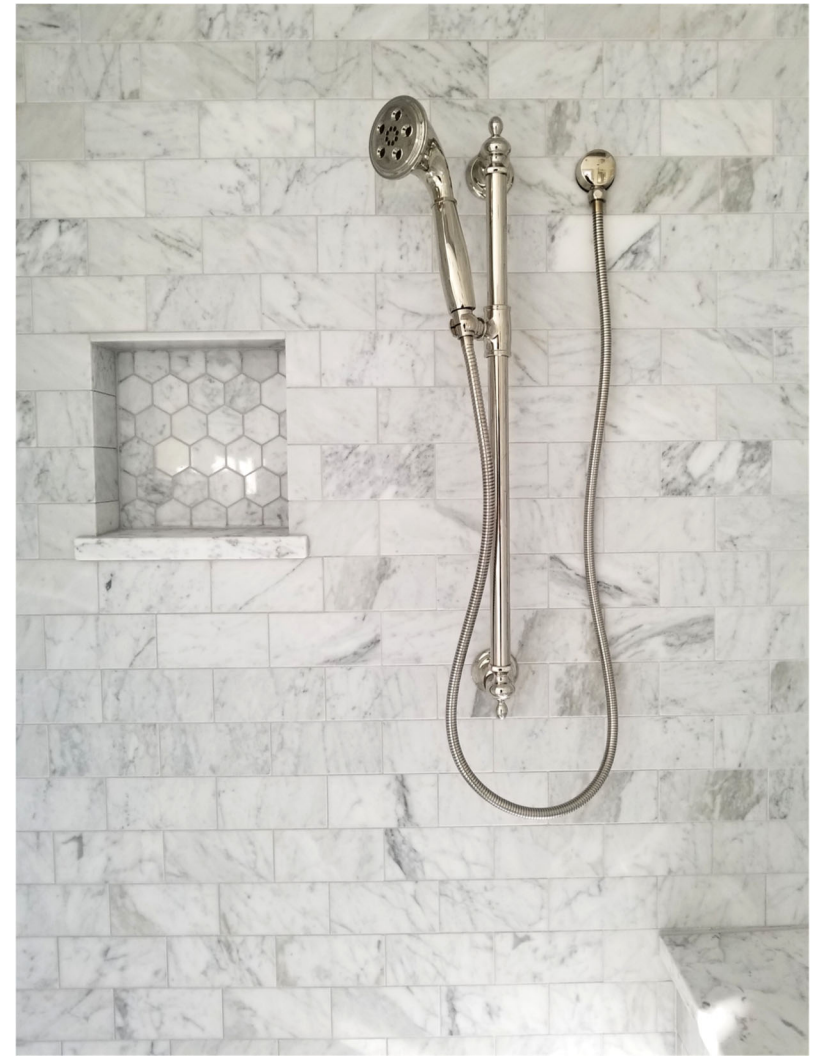
Denver, Colorado

Designed to fit into the historic Washington Park neighborhood of Denver, this new home by Kruger Design-Build and Christine Huckins Franck, Architect blends Arts and Crafts traditions with contemporary living.

An open, informal living, kitchen, and breakfast room is the heart of the house and connects to a mud room and garage. A formal dining room is served by a well-appointed butler pantry that passes through to the kitchen. Light-filled rooms with warm colors are brightened by white trim throughout the house.

The exterior landscape features low-water usage plants designed to thrive in the hot summers and cold winters of Denver, Colorado.





Carrara marble floors, countertops, and tile are set off by a cool gray wall color and white cabinetry and trim to create a soothing, elegant master bathroom (above). A custom designed vanity was set facing the window to give natural lighting,



The mud room (right and above) is designed with a slate floor, granite bench, and custom cabinetry which hides pull-out pantry storage and connects the garage to the kitchen.



A COUNTRY ESTATE

Douglas County, Colorado

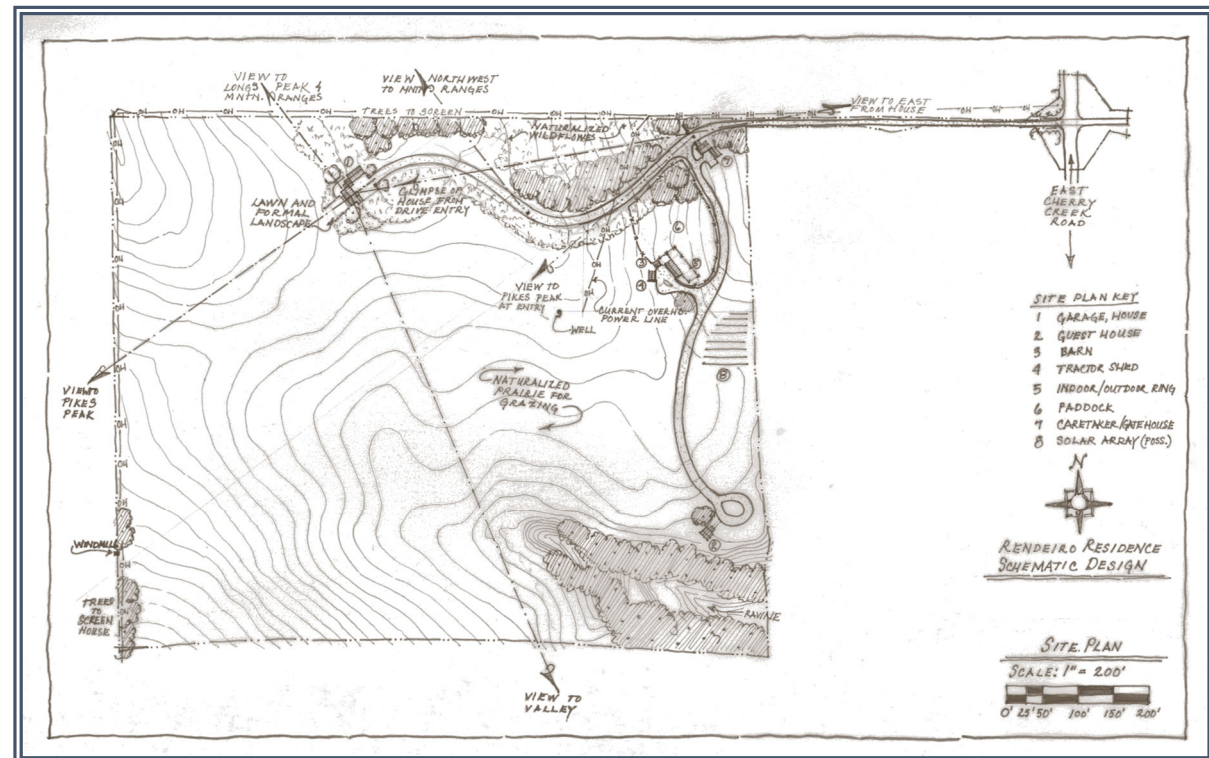
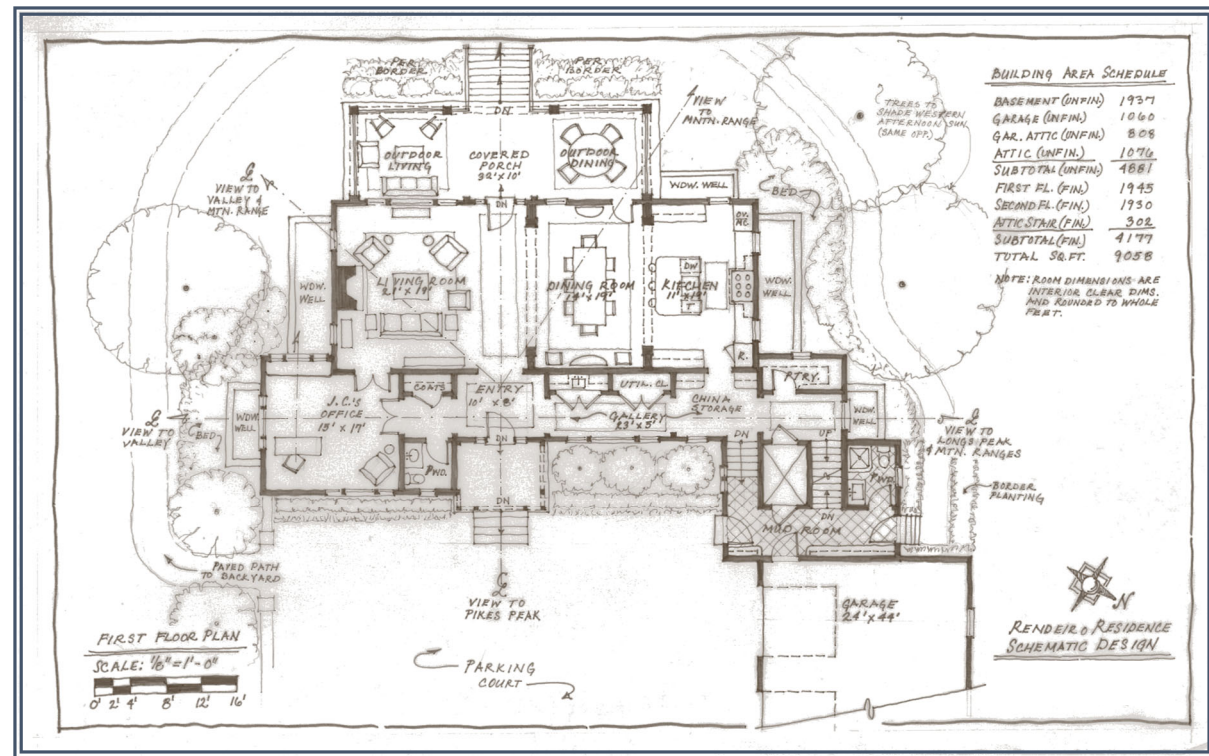
Designed for a couple retiring from Connecticut and relocating to Colorado, this rural residence was created to take advantage of the spectacular mountain views from this site located up on the Palmer Divide. The estate plan included a dressage ring, indoor riding ring, stables for the owner's horses, an equipment barn, a caretaker's cottage, and a small guest cottage.

The owner sought a plan that would balance their particular needs for an elevator so they could age in place, two master suites, two home offices, and a large, open living space including living, dining, and kitchen, all of which connected to the porch with its mountain views.

Designed to be executed in phases, for the owner's affordability, a master plan was completed first, showing all future phases of the project.

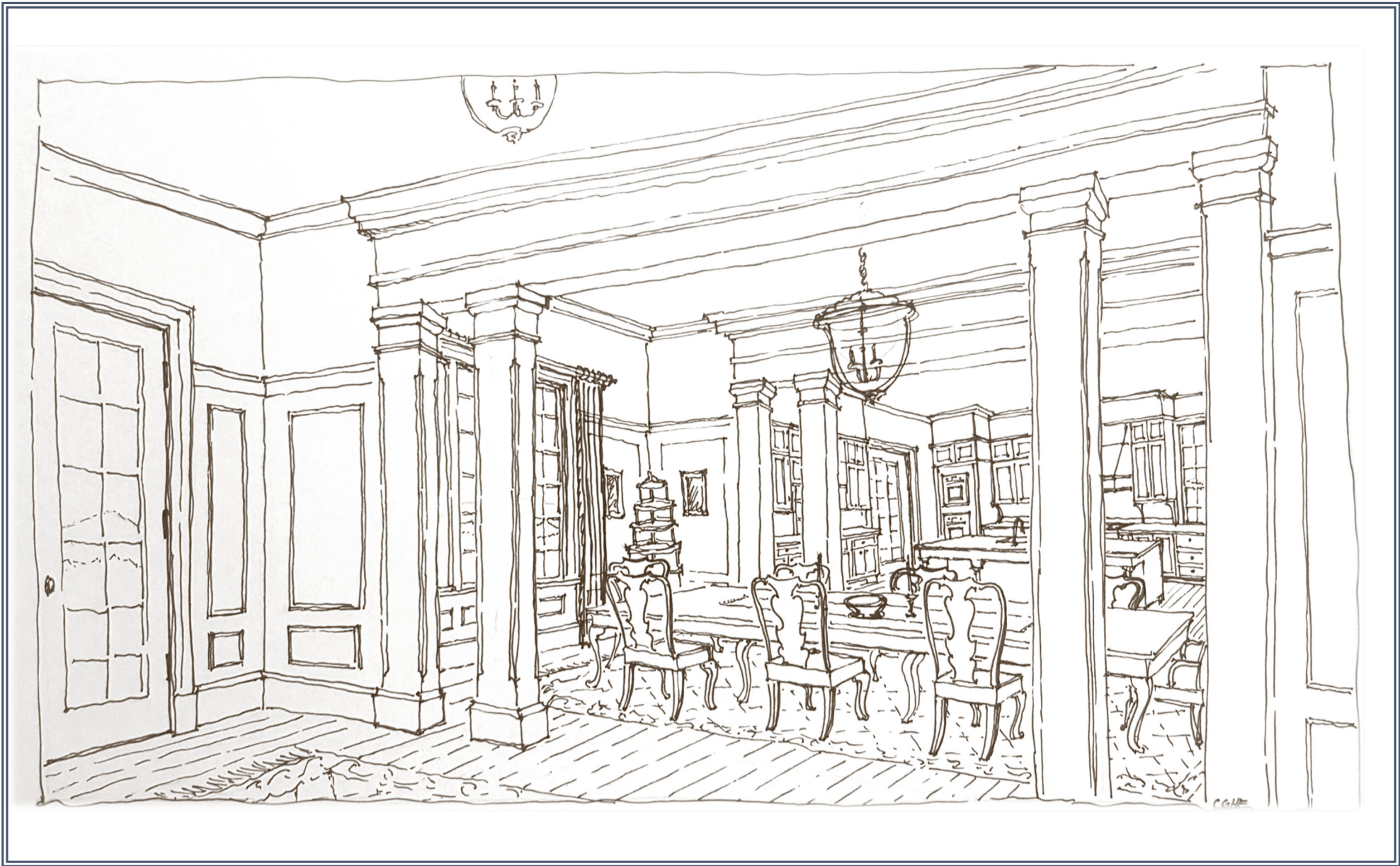
These sketches, all hand drawn by Christine Franck, show the schematic design for the estate (lower right), elevation (left), first floor plan (top right), and a series of principal interior spaces (following pages). These show our working process, in which we often employ sketches to show clients images of their home and spaces during the design process.

This project was a joint project between Christine Huckins Franck, Architect and Kruger Architecture.





The living room (above) was designed to capture views through the large picture window out to Pike's Peak, which helped determine the siting of the overall house. We used a high paneled wainscot through the living room and connected dining room (right) to give warmth and comfort to the space. Furniture shown in these sketches is the owner's collection of various early American antiques, collected throughout their years living in Connecticut.



Christine Huckins Franck, Architect, LLC

ARCHITECTURE • DECORATION • LANDSCAPE DESIGN

759 South Gaylord Street

Denver, CO 80209

(917) 693-0391

christine@christinefranck.com

www.christinefranck.com

@cghfranck